



# THE WHOLE OF THE MOON

FERGUSON-GLASS ORATION

Bill Glass Adelaide, May 2016

Blue Moon Mary McFarlane

**EVOLVE**

**EDUCATE**

**ENGAGE**

# EVOLVE

To UNFOLD

OPEN AND EXPAND

DISENTANGLE

UNRAVEL

DEVELOP

\*New Webster Encyclopedic Dictionary of The English language 1971

# EDUCATE

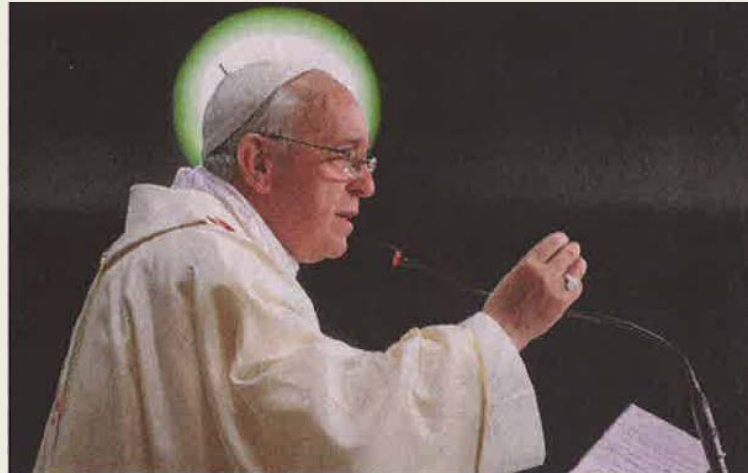
Education is communication and dialogue. However if it is assumed that no dialogue is possible then education becomes one of cultural invasion and manipulation.

\*Paulo Friere Pedagogy of the oppressed 1972

“All dialogue must begin from where each community is at. There must be a dignity and respect in approaching the beliefs of the other”

\*Rabbi Fred Morgan 2015

# The Grammar of Simplicity



Pope Francis at Copacabana



ENGAGE

To CONNECT

But the question is

With Whom?



***Bernardino Ramazzini***  
***Portrait by Anthony Stones***



“I will relate the incident that first gave me the idea of writing this treatise on the diseases of workers”

\* Bernardino Ramazzini, Diseases of cleaners of privies and cesspits, Chapter XIV De Morbis Artificum



***David Ferguson 1920-2002***

“Low-level asbestos-the priorities are wrong”

“RSI, putting the epidemic to rest”

“Australia has been backward in providing safe conditions for workers”

\* David Ferguson

# Qualities of An Occupational Physician

- To show humility, to be humble in our attitude to our patient and to knowledge
- To show empathy
- To show understanding
- To have integrity
- To have courage

\*Pavlova, Fruit Salad and a Dash of Lemon Juice  
Bill Glass, ANZSOM, Queenstown 2007



*Jackson Pollock's Blue Poles, No 11, 1952*



***Adelaide 1974***

“I mentioned that I felt the future of this Society was dependent to a large extent on the people for whom and with whom we worked”

Darryl O'Donnell 1973

“Are politicians and industry aware of what our speciality can offer?”

Darryl O'Donnell 1973





*David Douglas 1986*

“It is always difficult for clinicians to think of populations when all previous training has concentrated on individual patients”

David Douglas 1986

“It is also difficult for doctors to assess the value they might add to a workplace when previous conditioning has encouraged doctors to believe themselves indispensable and free from the need to justify their position”

David Douglas 1986

ISSN 0159-303X

# OCCUPATIONAL HEALTH

AUSTRALIA  
AND  
NEW ZEALAND

VOL. 4 NO. 1  
MARCH, 1982



## CONTENTS

|   |       |  |       |
|---|-------|--|-------|
| Editorials  |       | Sudden Death at Work and<br>1.1.1. Trichlorethane  | 37-39 |
| Private Practice in Occupational Medicine — Some Thoughts on Past, Present and Future | 5-9   | <i>B. Glass</i>  |       |
| A Burning Need  | 9-11  | An Evaluation of the Risk to Motor Vehicle Radiator Repairers of Excessive Lead Absorption | 40-43 |
| Notice from Acting Editor   | 11-13 | <i>T.H. Bierre and R.V. Winchester</i>   |       |
| Identifying Early Occupationally-Induced Asthma                                       | 13-21 | Stress Management in Work Settings   | 43-57 |
| <i>F.A. de Hamel</i>  |       | <i>M.W. Abbott</i>   |       |
| Current Concepts in the Prevention of Occupational Back Injury                        | 23-30 | The Behavioural Effects of Organic Solvents  | 59-63 |
| <i>B. Hocking</i>   |       | <i>H.A. Waldron and Nicola Cherry</i>  |       |
| Exposure to $\alpha$ -Quartz Dust in New Zealand Industries                           | 30-36 | Letter to the Editor   | 65-67 |
| <i>E.R. Nicol</i>   |       | <i>Tony Findlay</i>  |       |
|   |       | Newsletter   | 67-72 |

JOURNAL of the AUSTRALIAN & NEW ZEALAND SOCIETY of OCCUPATIONAL MEDICINE

Registered for posting as publication — Category B

## GABRIL'S FASHION FURS

LARGE RANGE OF IMPORTED  
& LOCAL FURS

Also Remodelling, Alterations,  
Repairs, Made-to-Measure Fur and  
Leather Garments

**Phone 95 7191**

**CUSACK CENTRE  
EYRE STREET  
KINGSTON, ACT 2604**



## AMPOL TOURIST CENTRE

**PACIFIC HIGHWAY  
SOUTH KEMPSEY, NSW**

Genuine 24 hours service  
Petrol — Food — Accessories  
Discount Tyres

**Phone: (065) 62 5333**

*Kindly sponsored by . . .*

## CORGLIN PTY LTD

EARTHMOVING CONTRACTORS  
GRAIN HAULAGE & STORAGE

**YARRIELAKE ROAD  
NARRABRI WEST, NSW  
(Postcode 2391)**

**Telephone:  
(067) 92 1568**

## DAPHNE'S FLORIST

ALL FLORAL WORK  
Members of Interflora

Wreaths Delivered in Lithgow area  
Funerals — Weddings — Birthdays  
Anniversaries — Hospitals  
Baskets

**40 MAIN STREET  
LITHGOW, N.S.W.  
Telephone: 51 3446**

*Daphne's Florist and  
Children's Wear*

**“Identifying early occupational asthma”,**

*by Francis de Hamel*

**“Current concepts in the prevention of occupational back injury”,**

*by Bruce Hocking*

**“Stress management in work settings”,**

*by Max Abbott*

**“The behavioural effects of organic solvents”,**

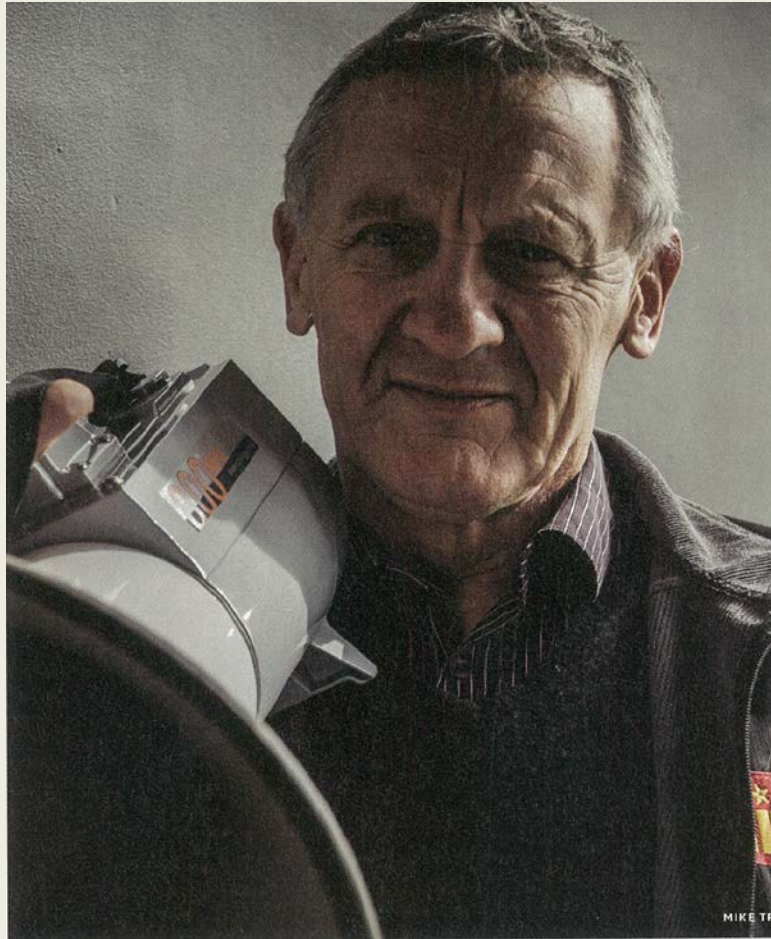
*by Tony Waldron and Nicola Cherry*

JOURNAL OF  
**Health, Safety  
and Environment**

Volume 31(2) June 2015

Editorial: Crash investigation in road freight transportation  
Letter to Editor: accreditation of OHS education  
Road safety compliance and enforcement  
Safe Work Method Statements & the hierarchy of control  
Sun safety in the workplace





***Mike Treen***



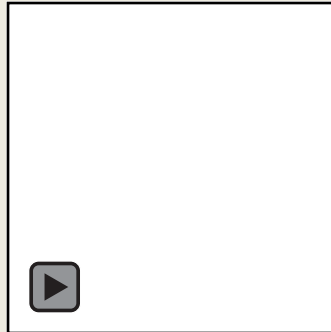
“The potential of the workplace for promoting health, engagement”

Dame Carol Black 2010



***Hone meets Hone***  
***Portrait sculpture by Anthony Stones***

# Monologue



# Monologue

- *I like working near a door. I like to have my work-bench close by, with a locker handy.*
- *Here, the cold creeps in under the big doors, and in the summer hot dust swirls, clogging the nose. When the big doors open to admit a lorry-load of steel, conditions do not improve. Even so, I put up with it, and wouldn't care to shift to another bench, away from the big doors.*
- *As one may imagine this is a noisy place with smoke rising, machines thumping and thrusting, people kneading, shaping and putting things together. Because I am nearest to the big doors I am the farthest away from those who have to come down to shout instructions in my ear.*

- *I am the first to greet strangers who drift in through the open doors looking for work. I give them as much information as they require, direct them to the office, and acknowledge the casual recognition that one worker signs to another.*
- *I can always tell the look on the faces of the successful ones as they hurry away. The look on the faces of the unlucky I know also, but cannot easily forget.*
- *I have worked here for fifteen months. It's too good to last. Orders will fall off and there will be a reduction in staff. More people than we cope with will be brought in from other lands: people who are also looking for something more real, more lasting, more permanent maybe, than dying... I really ought to be looking for another job before the axe falls.*

- *These thoughts I push away, I think that I am lucky to have a position by the big doors which open out to a short alley leading to the main street; console myself that if the worst happened I at least would have no great distance to carry my gear and tool-box off the premises.*
- *I always like working near a door. I always look for a work-bench hard by-in case an earthquake occurs and fire breaks out, you know?*



***The Blind Man and his Mate, 1967***



***The bus stop, 1967***





***Old Man and Street Cleaner chatting, 1976***



***Despair, 1967***



*With Lindsay at the first exhibition of the series Celebrating the New Zealand Worker*

- “People do their tasks with pride and dignity and their relationships with other workers are as important as a job well done.”
- “You have to have in mind an objective to keep looking for, the beauty in life-the positive part. That’s what’s missing in a lot of art-it’s looking on the dark side of life. I tend to look on the positive side.”

Lindsay Crooks 1992



*Apple Pickers*



*The Potato Pickers*



*Women Bootmakers, 1991*



*The shearer*





***Construction Site***



***ROBERT OWEN (1771-1858)***



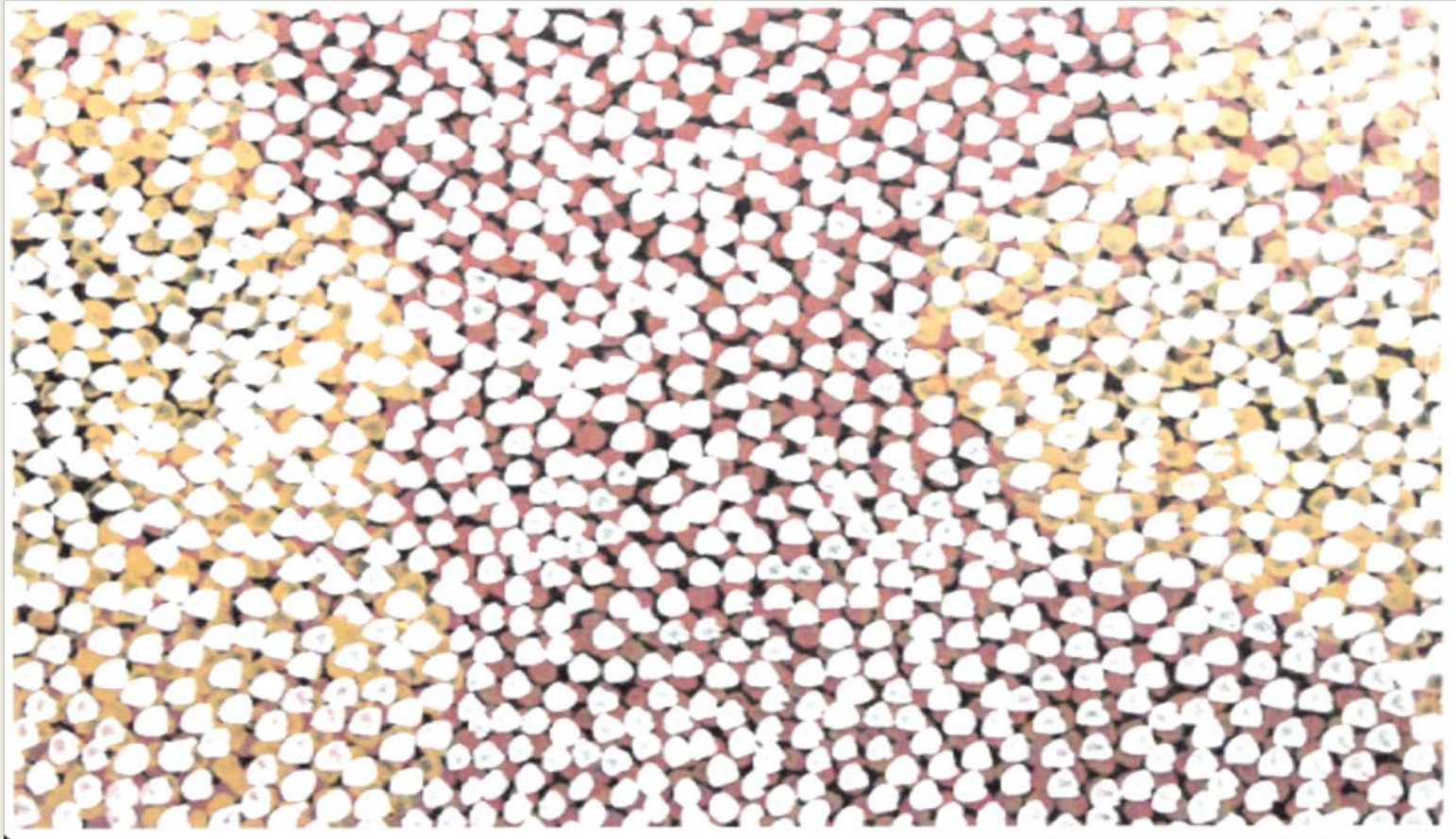
***Grace, Robin, Ron and Bill, Edinburgh 2010***

Healthy Workplace, Healthy Economy. The role of Health, Productivity, and Disability Management in Addressing the Nation Health Care Crisis. Here are three brief excerpts

- “The workforce is the engine that drives the economy and supports the financial underpinning of the health care system”
- “Fiscal soundness can be advanced through strategic investment in the health and productivity of the working-age population through a new preventive-based paradigm centred in the workplace”



***Old Mick Namarari Japaltjarri, 1926-1998. Pintupi People***

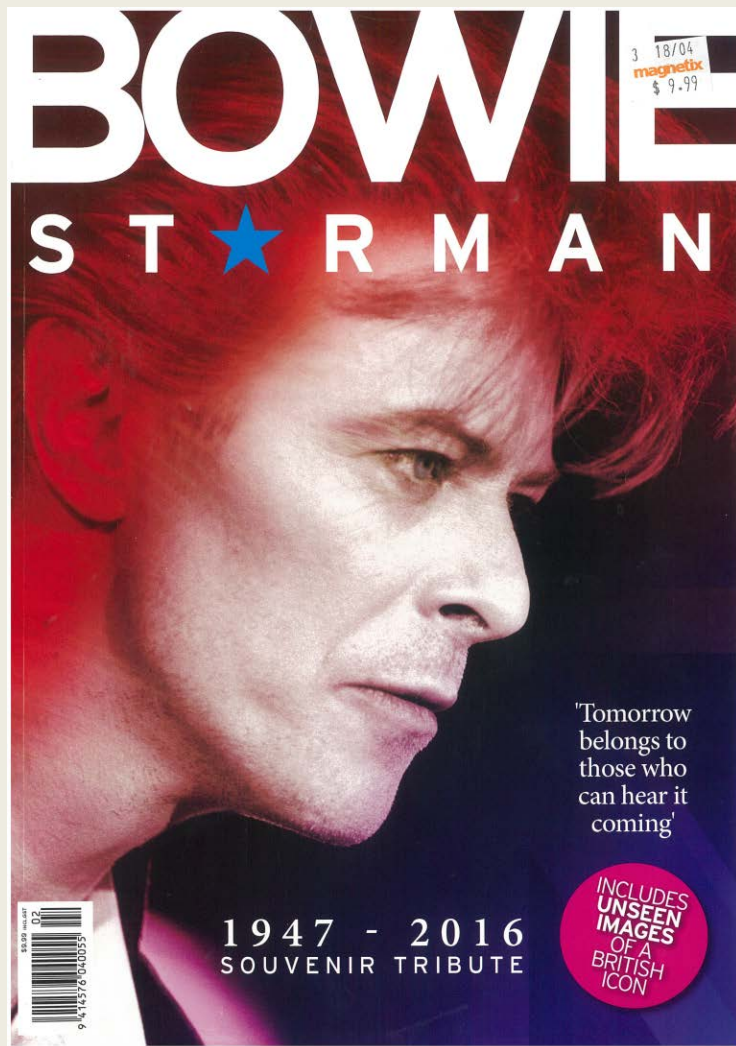


***Marsupial Mouse Dreaming***

# The Whole of the Moon

- I leave you with the third verse of Mike Scott's song, recorded by The Waterboys in 1989.

I was grounded  
While you filled the skies  
I was dumbfounded by truth  
You cut through lies  
I saw the rain dirty valley  
You saw Brigadoon  
I saw the crescent  
You saw the whole of the moon.



“Tomorrow belongs to those who can hear it coming”



