



RACP

Specialists. Together

EDUCATE ADVOCATE INNOVATE

Royal Australasian College of Physicians Overseas Trained Physician (OTP) Guidelines (New Zealand)

2018

Contents

- Royal Australasian College of Physicians..... 2
 - Overseas Trained Physicians and Paediatricians seeking registration to practice in New Zealand 2
 - Important Information 3
 - How to Apply 3
 - Summary of the OTP Assessment Process 3
 - Preliminary Advice 5
 - Outcome of Preliminary Advice 5
 - Interview Advice..... 6
 - OTP Assessment Process Flow Diagram..... 7
 - Outcome of Interview Advice 8
 - Option C - Not Equivalent..... 8
- Applying for Vocational Registration 9
- Fellowship of the RACP 9

Royal Australasian College of Physicians

Overseas Trained Physicians and Paediatricians seeking registration to practice in New Zealand

The Medical Council of New Zealand (MCNZ) is the regulatory authority responsible for medical registration in New Zealand. Its statutory role is to protect the health and safety of the public in New Zealand by ensuring that medical practitioners are competent and fit to practice medicine. Overseas trained physicians and paediatricians (OTP) must apply directly to the MCNZ for registration to practice in New Zealand. The MCNZ determines the type of registration for which an OTP is eligible and makes the final decision on whether registration is granted.

If you have completed specialist training to become a physician or paediatrician overseas, you may be eligible to practice in New Zealand. There are several registration pathways available to OTPs so you should consult with the MCNZ on which pathway is best for you before applying.

To practice as a specialist/consultant in New Zealand, you must apply for provisional vocational registration and be assessed by the MCNZ. The RACP will be asked to assess the equivalency of an OTP's qualifications, training and experience compared to an Australasian trained physician or Paediatrician. The RACP provides a recommendation to the MCNZ on equivalency.

These guidelines provide important information for overseas trained physicians and paediatricians seeking vocational registration to practice in New Zealand. Further information can be found on the MCNZ website www.mcnz.org.nz.

Important Information

You should review and consider the following points before applying for vocational registration with the MCNZ. This information sets out important guidance on the training, qualifications, assessments and experience that can be considered for assessment. If you are unable to meet these requirements, you should seek clarification from the RACP OTP Unit before submitting your application otp@racp.org.nz.

1. If you have limited experience at the level of a consultant physician or paediatrician, you must have successfully completed a minimum of four years of accredited overseas specialist training. Accredited specialist training must be formally recognised in your country of training.
2. If you have less than four years of accredited overseas specialist training, you should have a minimum of three years consultant experience at the level of an Australasian trained physician or Paediatrician in the specialty in which you are applying for assessment.

How to Apply

Firstly, contact MCNZ to enquire about your registration options. You can find information on the [MCNZ website](#) including links to all MCNZ forms and a fee schedule. You can download the MCNZ VO3-B information document which outlines the additional documents that you are required to submit along with your application.

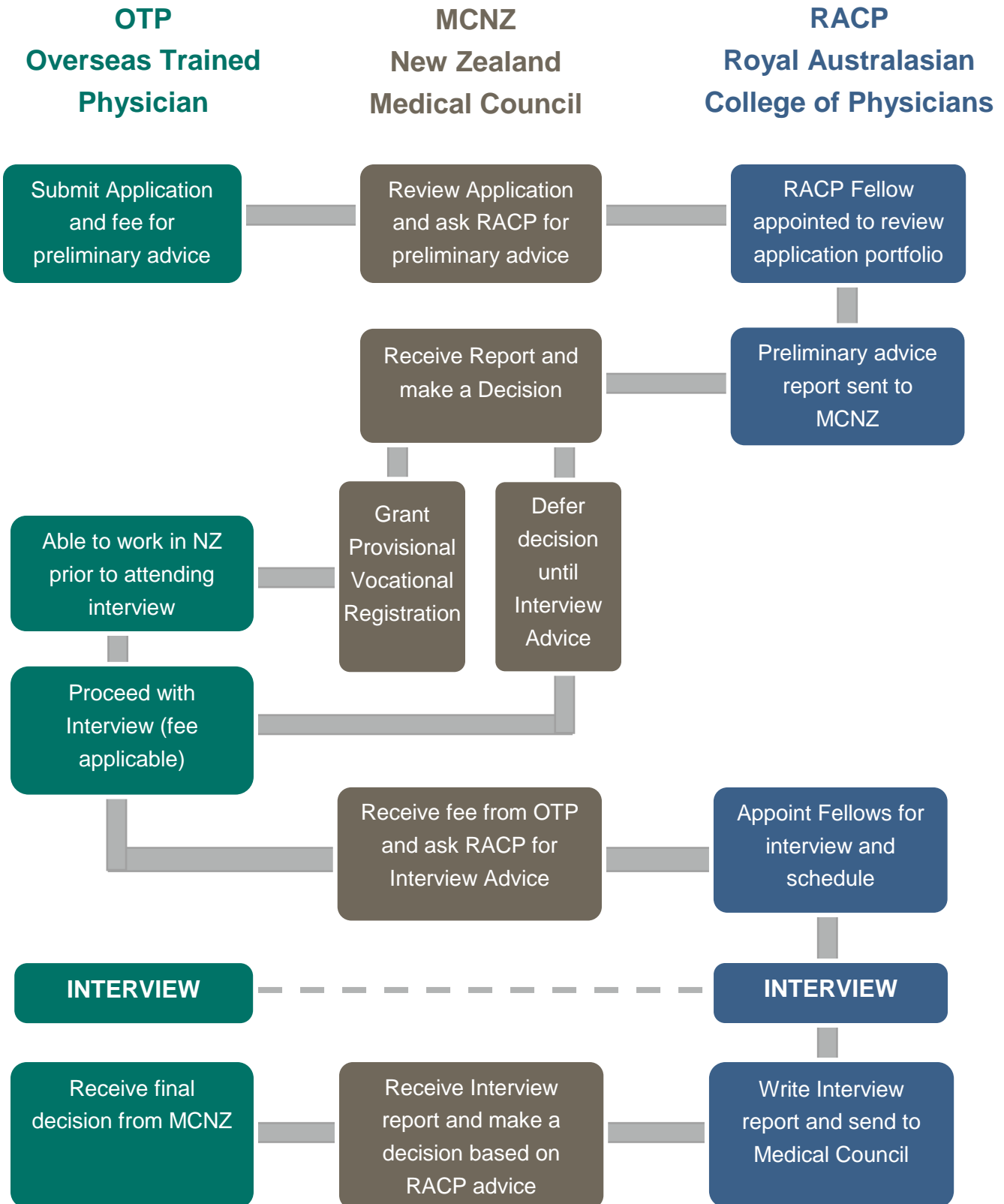
Summary of the OTP Assessment Process

You must submit your provisional vocational registration application to the MCNZ. Applications cannot be submitted directly to the RACP. The MCNZ will refer your application to the RACP to assess whether your qualifications, training, assessments and experience are equivalent, nearly equivalent or not equivalent to those of an Australasian trained physician or paediatrician.

It is useful for you to have a good understanding of the relevant Australasian physician/paediatrician training programs to demonstrate how your qualifications, training, assessment and experience compare. You should familiarise yourself with the RACP's Basic Training Curricula and the relevant Advanced Training Curricula, available on the RACP's website:

- [Basic training](#)
- [Advanced training](#)
- [Professional practice framework](#)

OTP Assessment Process Flow Diagram



Preliminary Advice

Depending on your circumstances, you may be able to apply for preliminary advice prior to interview advice. The same application and documents can be used for both types of application. Alternatively, you can just apply for interview advice.

Preliminary advice provides an initial paper-based assessment of your equivalence to an Australasian trained physician or paediatrician. It provides an indication of the potential decision and assessment requirements you will be required to undertake if you progress your application to interview advice. Preliminary advice is generally most useful if you are currently based outside of New Zealand.

Outcome of Preliminary Advice

Option A or B

If your preliminary advice indicates that your qualifications, training, assessments and experience are equivalent or nearly equivalent to an Australasian trained physician or paediatrician, you may be granted provisional vocational registration by the MCNZ. This enables you to practice in New Zealand whilst progressing your application to interview advice.

You should be aware that even when you have completed a preliminary assessment and been granted provisional vocational registration by the MCNZ, you must still attend an interview for the MCNZ to make a final decision on your equivalency and the requirements you must complete to obtain vocational registration in New Zealand.

Option D

The RACP may determine that they do not have enough information to make a recommendation for preliminary advice. They may need to interview you to gather more information before making a recommendation to the MCNZ. If a recommendation cannot be provided, the MCNZ will defer any decisions on your application for provisional registration until interview advice has been received.

You can choose to withdraw your application at this stage or proceed to interview advice.

Interview Advice



The interview provides the opportunity for RACP Fellows to obtain further information on your qualifications, training, assessments, experience and continuing professional development (CPD). Interviews are not designed to assess or examine you but to gather information and clarify any gaps in training and/or experience. Interviewers will prepare questions based on the information you have provided in your application. Questions will cover the following areas:

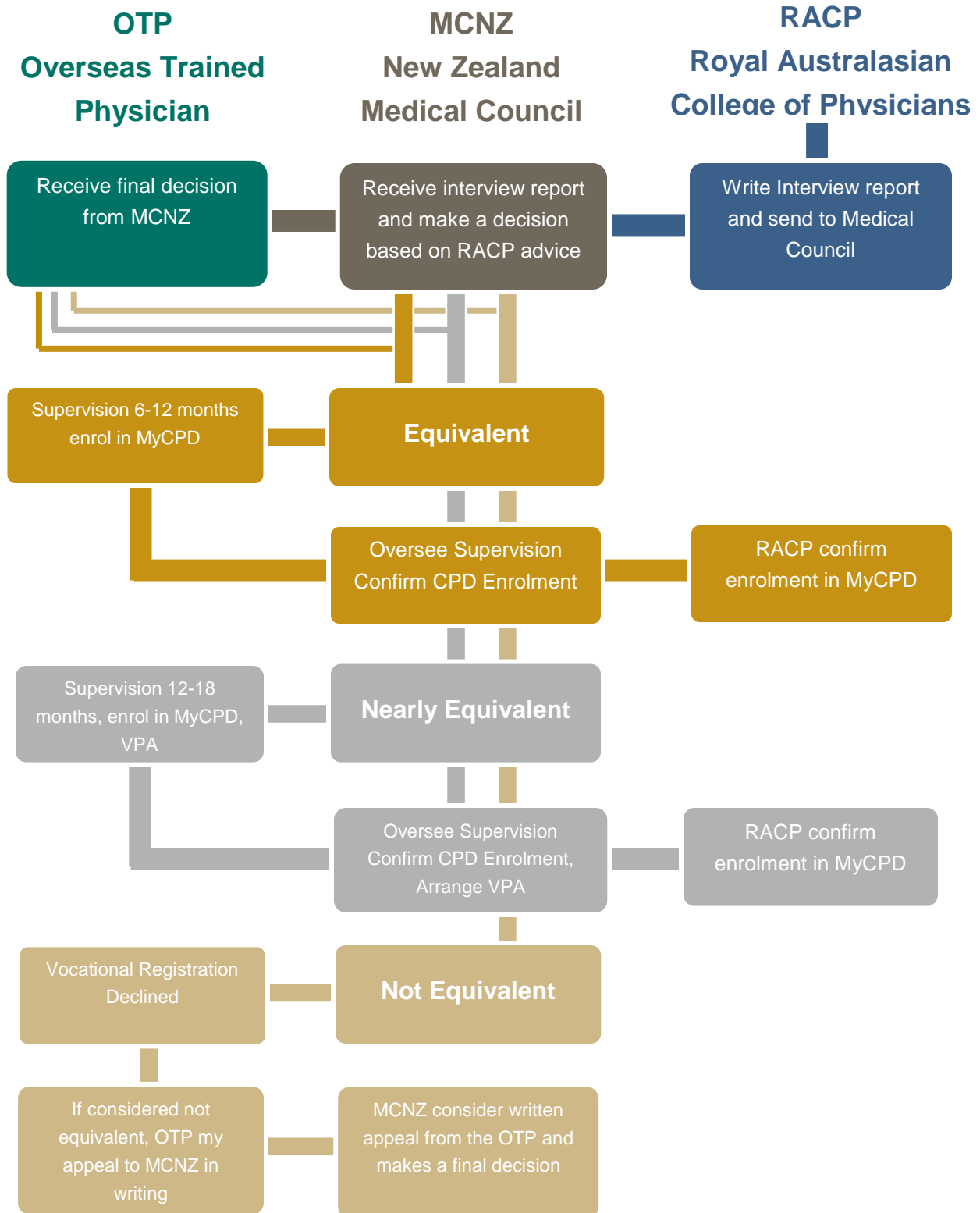
- Basic or core training
- Advanced or specialist training
- Formative and summative assessments completed during and after training
- Specialist practice
- Participation in CPD
- Quality assurance practices
- Attainment of higher qualifications
- Contributions to the field of medicine
- Your readiness for specialist practice in New Zealand
- Any questions you may have about specialist practice in New Zealand.

Interviews are usually conducted face-to-face and arranged in major New Zealand cities, subject to the availability of the interviewing panel. The interview takes approximately one hour. Interviewers do not determine your equivalency but make a recommendation to the New Zealand OTP Assessment Committee. The Committee determines the RACP's recommendation on your equivalency and provides this recommendation to the MCNZ.

OTP Assessment Process Flow Diagram

The outcome of the interview and decisions from the MCNZ will be one of the three options:

■ Equivalent
 ■ Nearly Equivalent
 ■ Not Equivalent



Outcome of Interview Advice

The MCNZ will advise you of their decision on your application for provisional vocational registration and the requirements you must complete to obtain vocational registration. You will also receive a copy of the recommendation made by the RACP. The final decision made by the MCNZ will be one of the following three options:

Option A – Equivalent - Supervision pathway

If your qualifications, training and experience are found equivalent to an Australasian trained physician or paediatrician, the MCNZ will inform you of your supervision requirements. Before you can commence practice in the provisional vocational scope in New Zealand, your employment and supervision plan must be approved by the MCNZ. You must also enrol in the RACP's MyCPD program by emailing mycpd@racp.org.nz. You can find out more about the RACPs CPD requirements on the [RACP website](#).

Option B – Nearly Equivalent - Assessment pathway

If your qualifications, training and experience are found nearly equivalent to an Australasian trained physician or paediatrician, the MCNZ will inform you of your supervision and assessment requirements. Before you can commence practice in the provisional vocational scope in New Zealand, your employment and supervision plan must be approved by the MCNZ. You must also enrol in the RACP's MyCPD program by emailing mycpd@racp.org.nz. You can find out more about the RACPs CPD requirements on the [RACP website](#).

You will also undergo an assessment during the supervision period which is mandated and organised by the MCNZ. This is usually a vocational practice assessment (VPA). A VPA is a one-day workplace assessment with two assessors. The assessors will observe and interact with you and your colleagues, using a set of assessment tools. Information on VPAs is available on the [MCNZ website](#).

Option C - Not Equivalent

If your qualifications, training and experience are found not equivalent to an Australasian trained physician or paediatrician, you will be informed of the MCNZ's decision via letter. The letter contains essential information and it is important to retain a copy. You will also receive a copy of the recommendation made by the RACP. You can appeal the decision with a written submission to the MCNZ. More information on the process is available on the [MCNZ website](#).

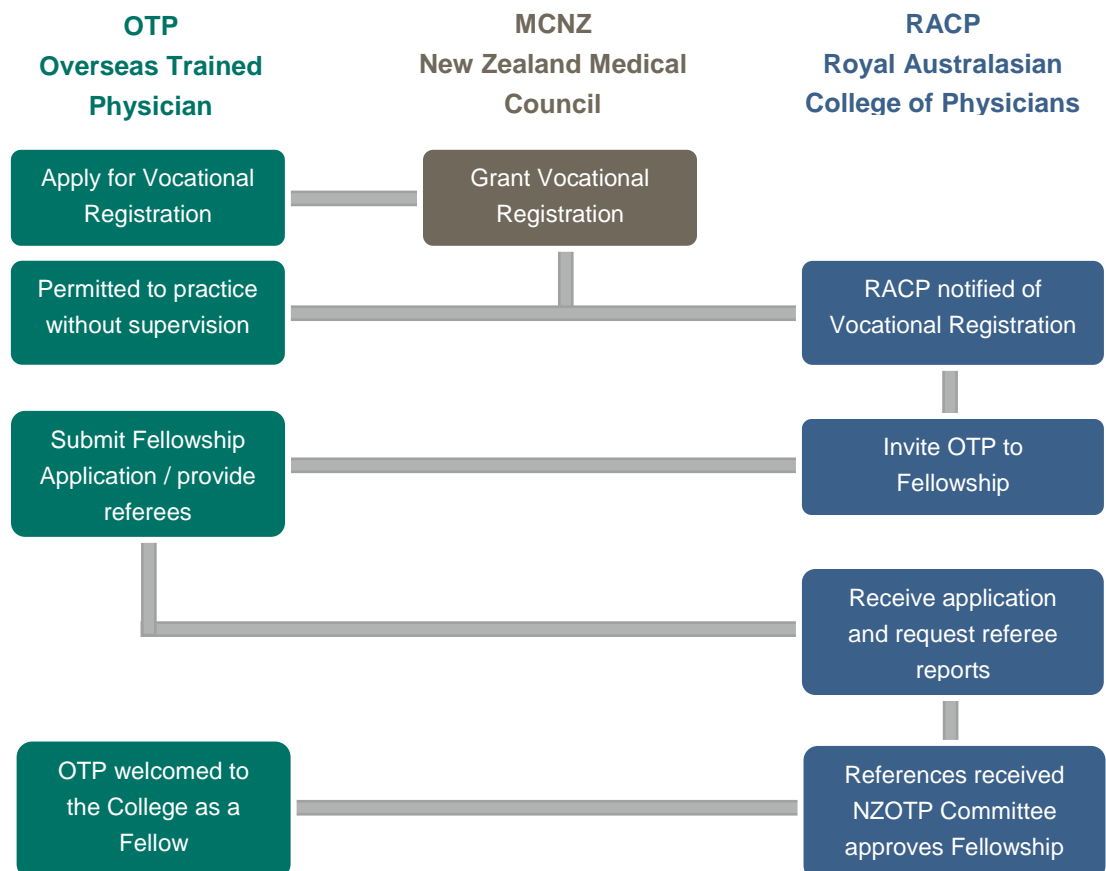
You may have other options for registration and should contact the MCNZ to discuss potential alternatives.

Applying for Vocational Registration

The MCNZ has oversight of the supervision and assessment pathways. You must complete the vocational registration requirements as set out by the MCNZ. The MCNZ will advise you when you have met the requirements successfully and are eligible to apply for vocational registration. You will then need to complete an application for a change to your scope of practice (COS5 form).

Fellowship of the RACP

The RACP will receive a copy of the MCNZ letter advising that you have been granted vocational registration. You may then be eligible to apply for Fellowship of the RACP. When you have been granted vocational registration, the RACP will contact you directly to advise whether you are eligible to apply. The RACP will request references from three Fellows of the College. If you wish to seek Fellowship of a Chapter or Faculty of the College, additional requirements may need to be completed. Generally, the RACP will advise you in advance if you are required to complete additional requirements for Fellowship.



A photograph of a modern hospital room. In the foreground, a patient bed with a white sheet and blue frame is visible. To the right, a white curtain hangs from a track. In the background, there is a medical workstation with a monitor and various equipment. The room has a clean, bright appearance with white walls and a light blue floor.

Royal Australasian College of Physicians

College of the Dean

OTP Unit

99 The Terrace

Wellington

Ph: +64 4 460 8155

otp@racp.org.nz