



Climate-related migration, Pacific Island countries and health

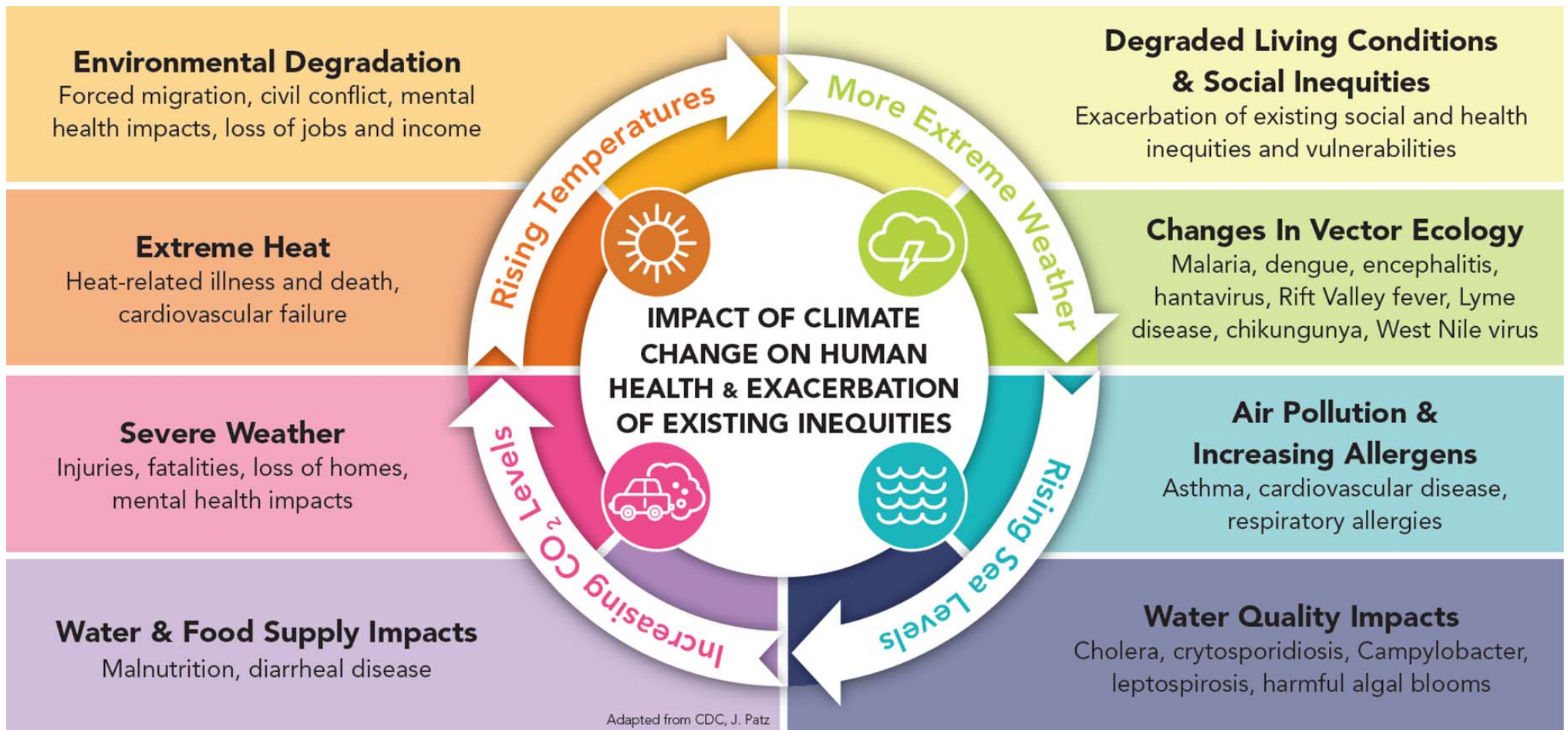
**RACP
CONGRESS
2018**
Sydney
14 – 16 May 2018

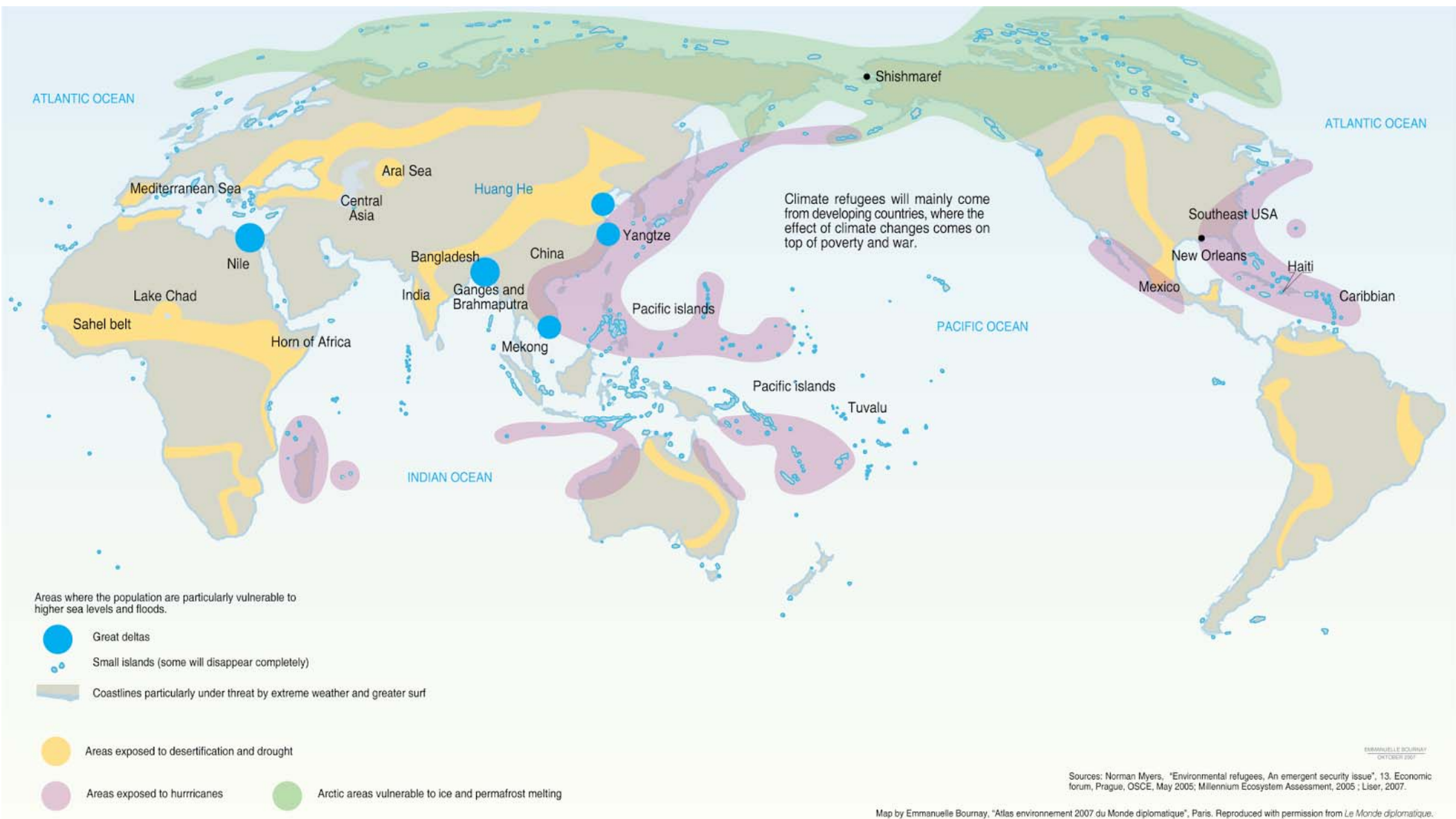
Dr Celia McMichael

School of Geography, The University of Melbourne

www.racpcongress.com.au

Climate Change and Population Health Impacts

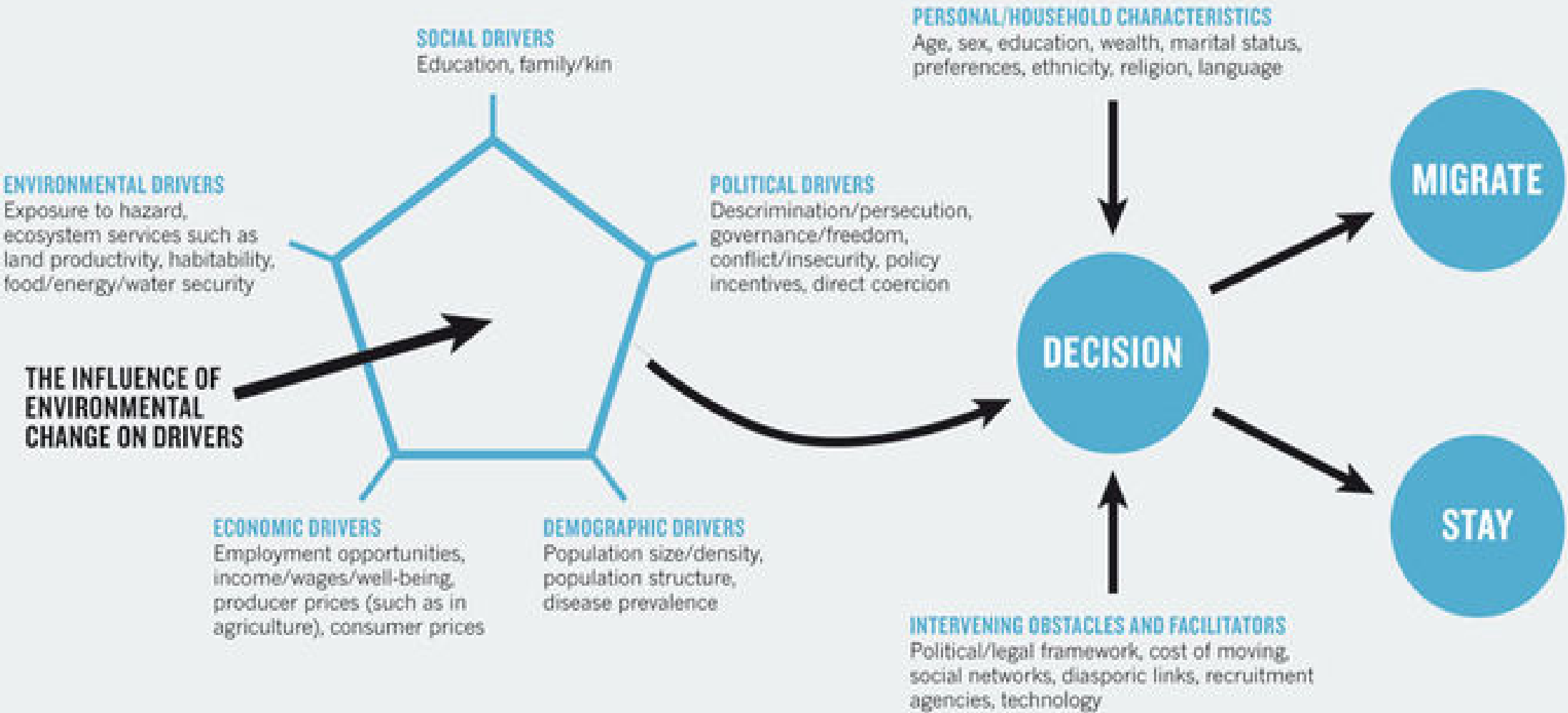


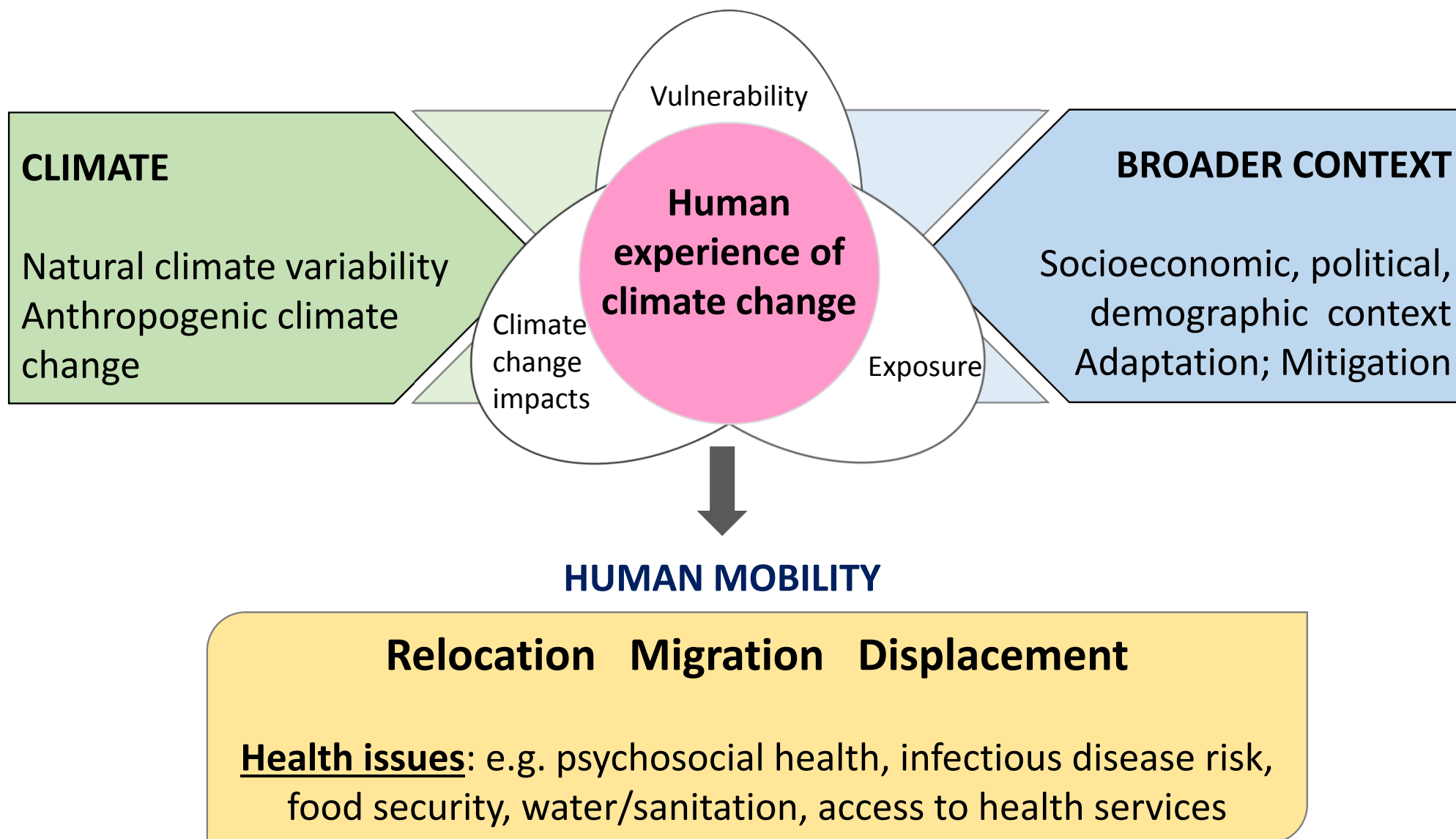


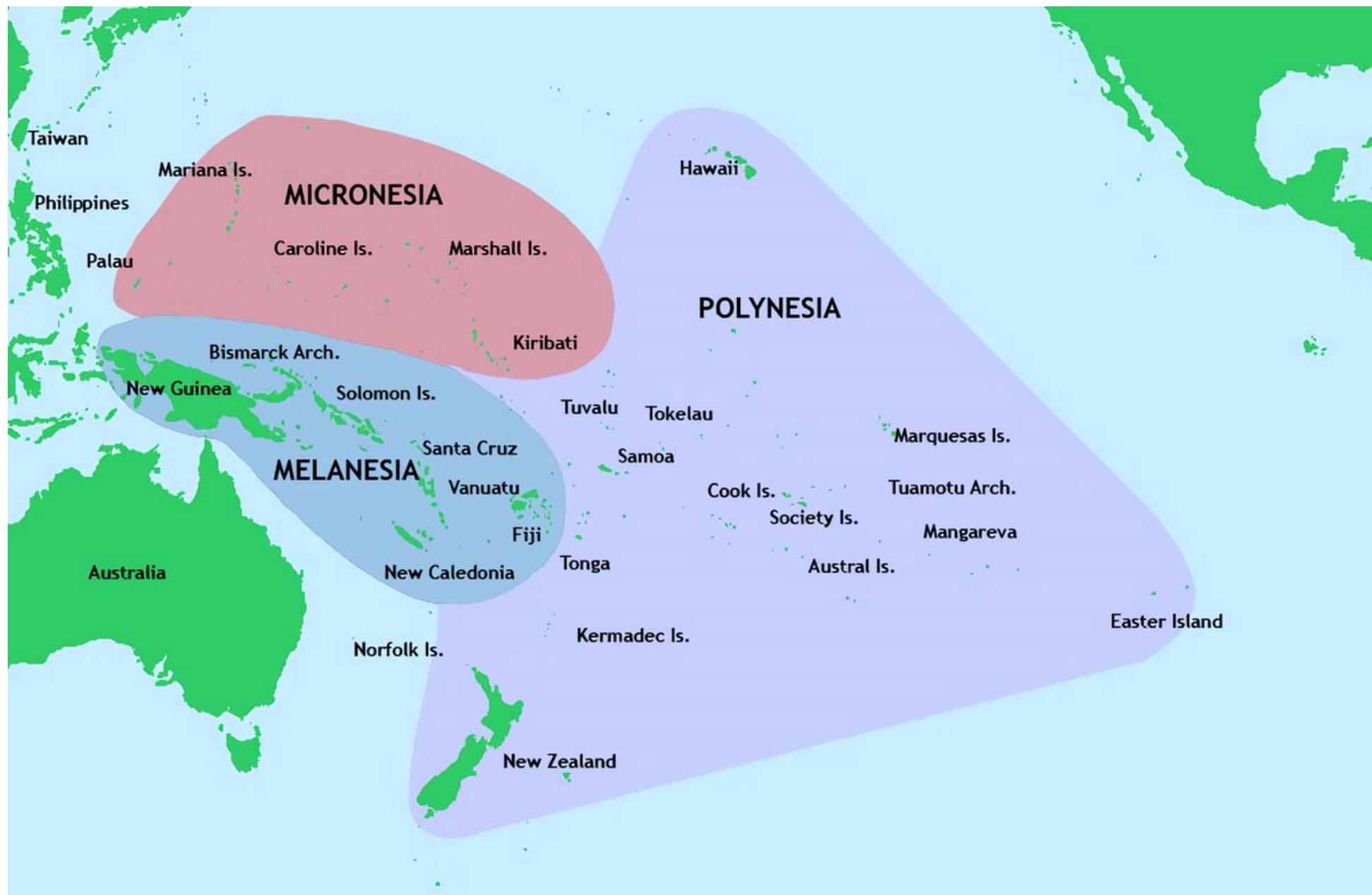
Interpret with caution

THE DRIVERS OF MIGRATION

Many factors influence whether a person or family will migrate. Their effects are closely intertwined, so it makes little sense to consider any of them in isolation.



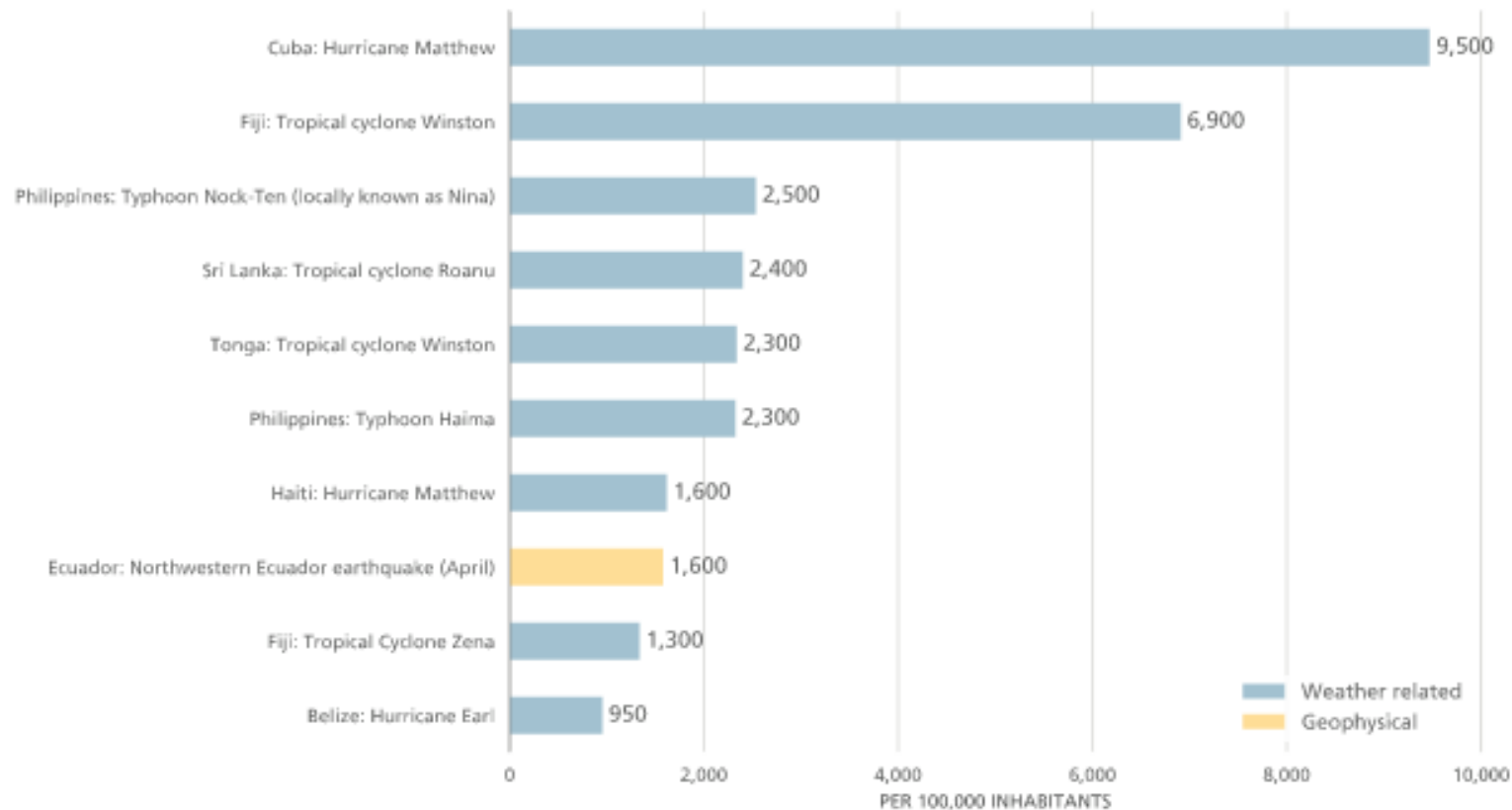




1. DISASTER, FORCED DISPLACEMENT AND HEALTH

The ten largest disaster displacement events of 2016

Relative to population size



Source: IDMC, with UN Population Division data



Cyclone Pam, Vanuatu

Forced displacement and overcrowding leads to increased potential for communicable disease:

- acute respiratory infections
- vaccine-preventable disease
- diarrhoeal disease
- hepatitis A and E
- meningococcal disease
- disrupted STI/HIV prevention

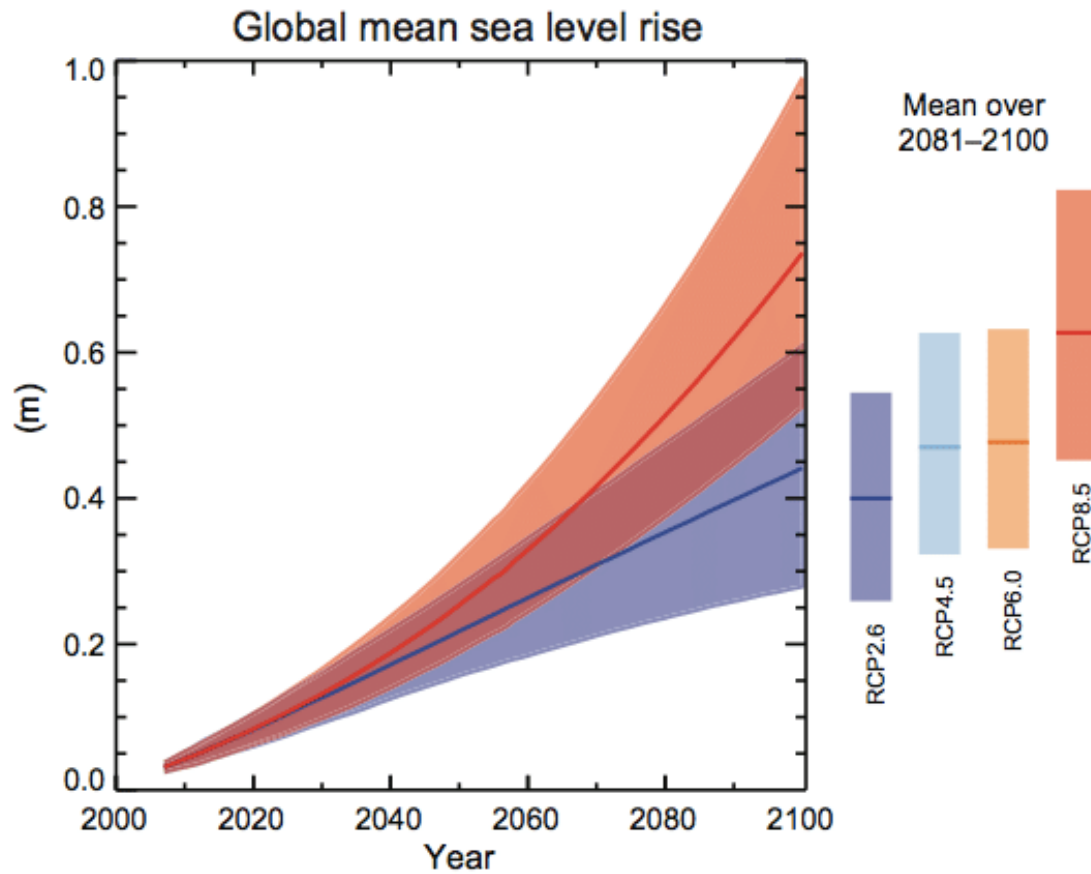
2. CLIMATE-RELATED MIGRATION AND HEALTH

(migration and climate-related health challenges)



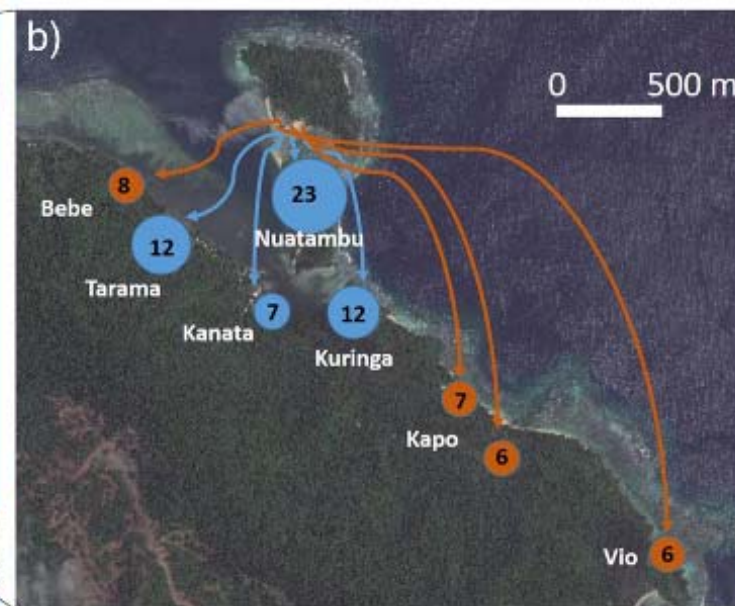
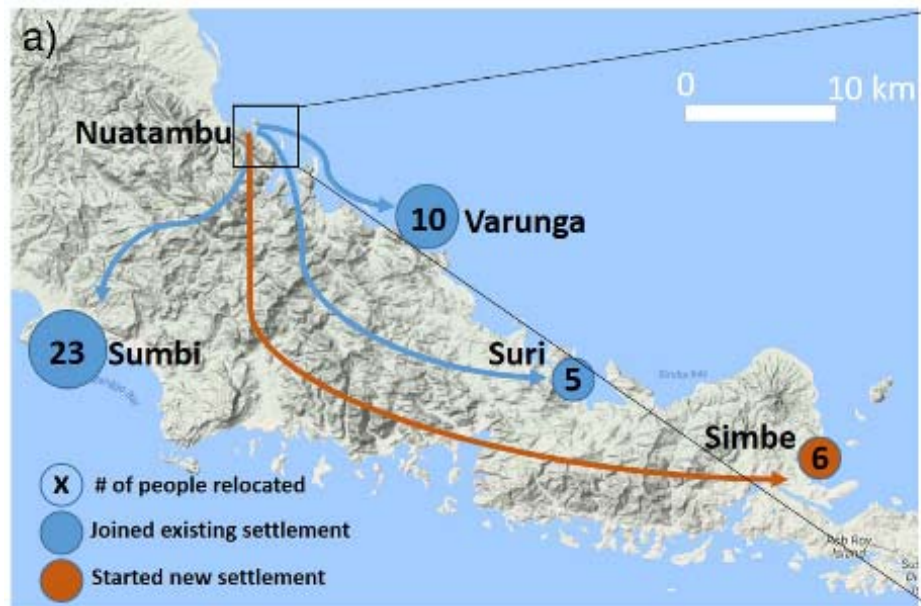
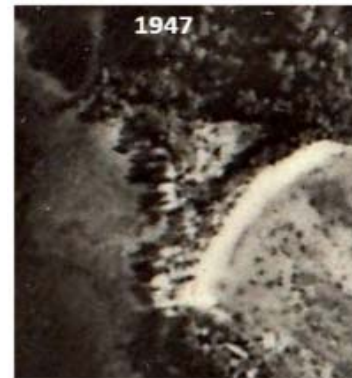
<http://www.pngblogs.com/2016/08/port-moresby-big-squatter-settlement.html>

3. CLIMATE-RELATED RELOCATION AND HEALTH IN PICs



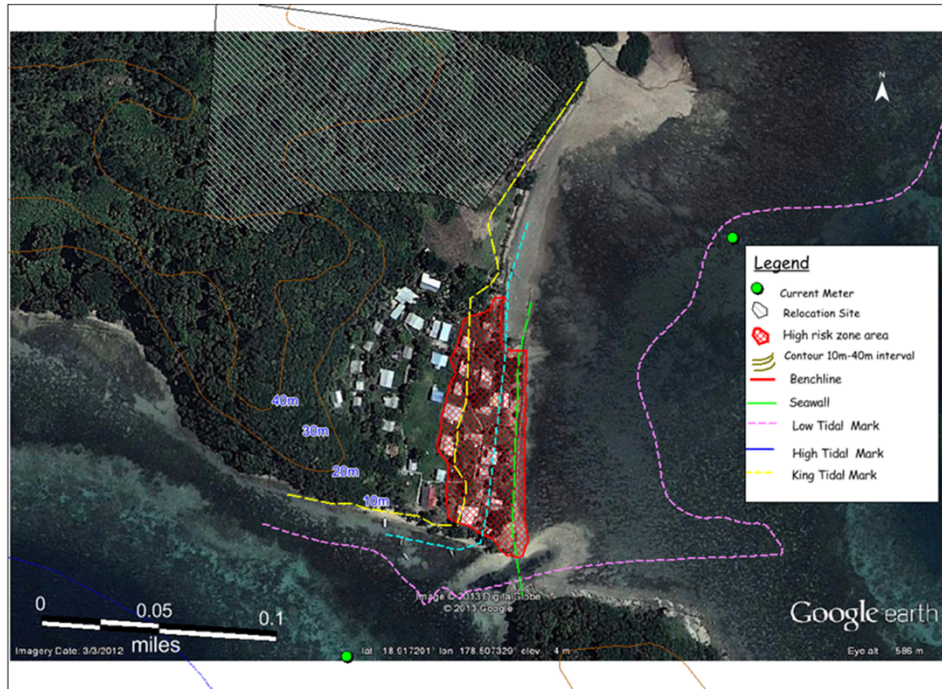
Karoko, Fiji

Nuatambu, Solomon Islands: 133 people relocated, 54 remain



“Red Zone”: Narikoso vulnerability map, Fiji

(Source: Mineral Resources Division 2013)



Vunidogoloa relocation in Fiji



Migration, health and climate justice



Coastal erosion in Australia



Coastal erosion in Fiji

Diverse types of climate-related migration

Extreme weather events

- Cyclones
- Floods



1. DISPLACEMENT

Loss of ecosystem

- Drought
- Altered food and water availability



2. MIGRATION

Sea level rise:

- Rising average sea level
- Salt water intrusion in aquifers



3. RELOCATION